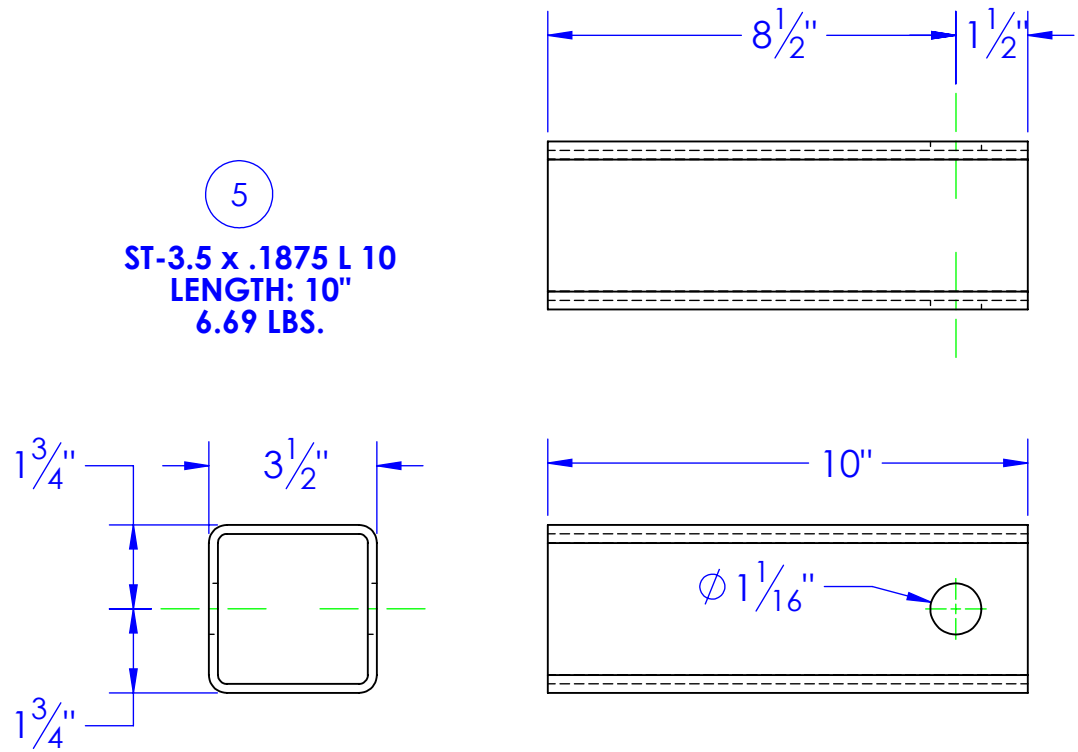
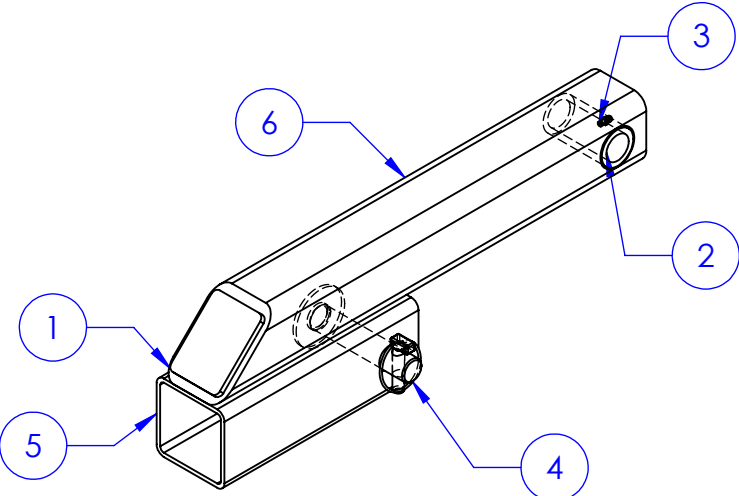
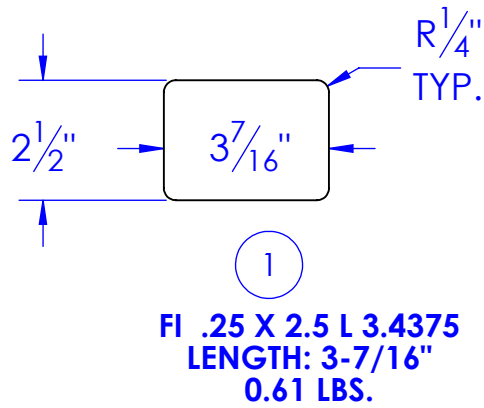
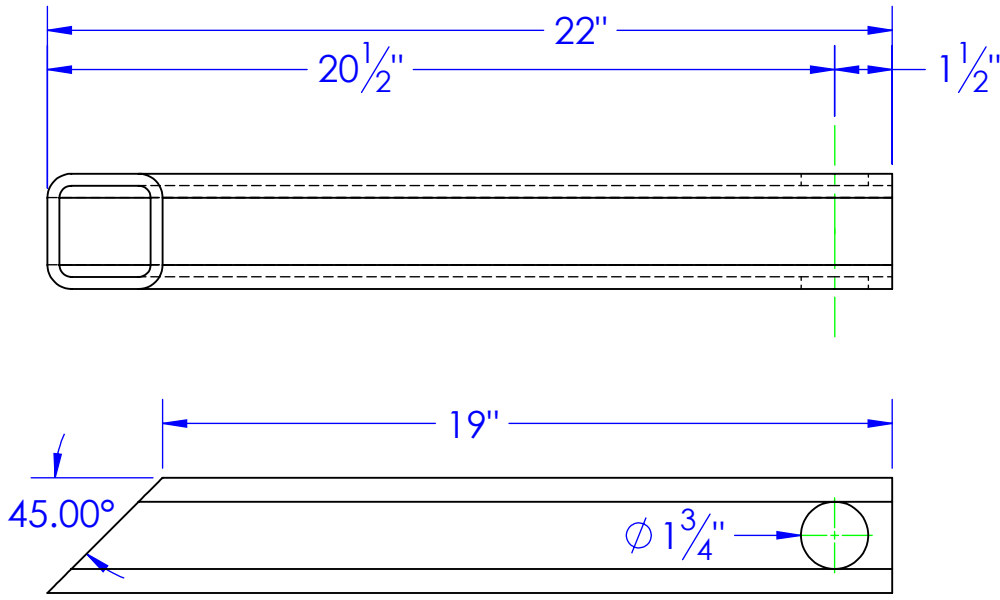
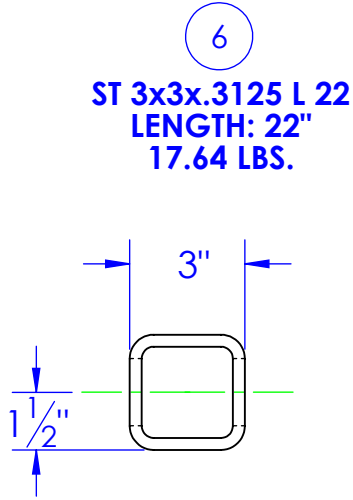
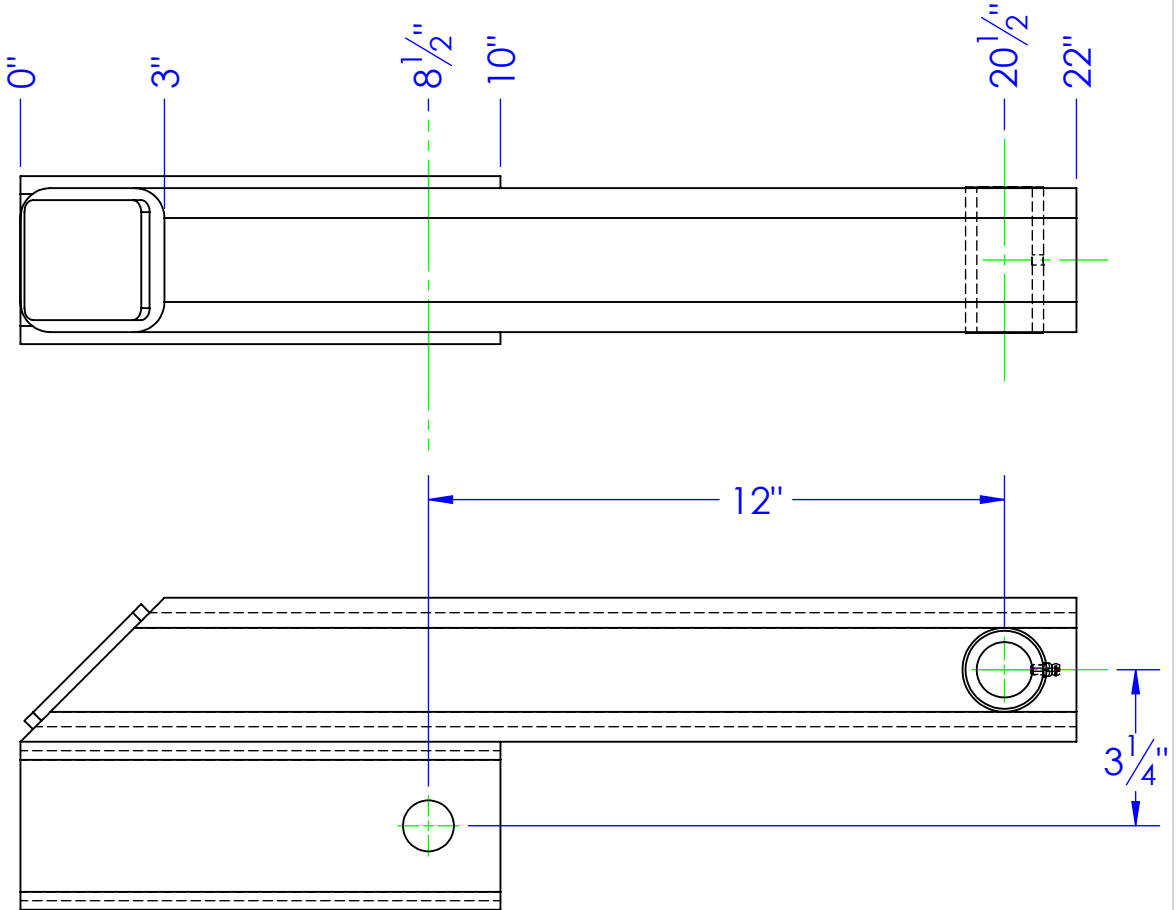
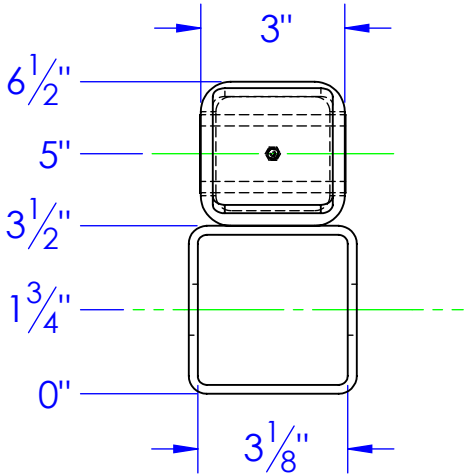


ITEM NO.	PART NUMBER	DESCRIPTION	MATERIAL	DRAWING #	QTY.
1	FI .25 X 2.5 L 3.4375	LENGTH: 3-7/16"	FI 1/4" x 2-1/2"	STOCK	1
2	FP-SB00-100	00 SPINNER BUSHING	MT 1.625x1.125	10-2500	1
3	HD-ZG .25-28 STR	GREASE ZERK 1/4-28 STRAIGHT	STOCK	STOCK	1
4	RE-PN-C1x475	PIN, CON, 4-7/8"		10-1707	1
5	ST-3.5 x .1875 L 10	LENGTH: 10"	ST-3-1/2 x 3/16"	STOCK	1
6	ST 3x3x.3125 L 22	LENGTH: 22"	ST-3 x 5/16	90-1309	1

REV.	REVISIONS	DATE	APPROVED
	DESCRIPTION		
B	UPDATED TO MATCH 3D MODEL	12/20/2012	



REQD QTY: 2



PROPRIETARY AND CONFIDENTIAL

THE INFORMATION CONTAINED IN THIS DRAWING IS THE SOLE PROPERTY OF <INSERT COMPANY NAME HERE>. ANY REPRODUCTION IN PART OR AS A WHOLE WITHOUT THE WRITTEN PERMISSION OF <INSERT COMPANY NAME HERE> IS PROHIBITED.

UNLESS OTHERWISE SPECIFIED:

DIMENSIONS ARE IN INCHES

TOLERANCES:

FRACTIONAL $\pm 1/16$

ANGULAR: MACH ± 1 BEND \pm

TWO PLACE DECIMAL ± 0.10

THREE PLACE DECIMAL ± 0.05

MATERIAL

DO NOT SCALE DRAWING

		NAME	DATE	P.O. BOX 248, SABETHA KS. 66534 (785) 284-3674 FAX (785) 284-3931		
DRAWN		HEATH	12/21/2012	<div>TRIPLE C</div> <div>INC.</div>		
PART #						
ASM #		OP-AE-121SB				
COMMENTS:				SIZE	DWG. NO.	REV
ARM EXTENSION DELUXE, 150 SERIES				B	90-1308 B	B
				SCALE: 1:4		WEIGHT: 27.03